



There's a reason open-concept interiors are the layout of choice. They offer versatility to accommodate a variety of functions and furnishings.

IN THE COMFORT ZONE

'Adaptable design' is the ability to layer in elements as needed and that stand the test of time

BY EUGENIA TRIANDOS
AND KORINA KHARMIS

The world around us, and our place within it, is constantly changing. Our homes have to keep pace.

Sometimes, these changes come as a gradual evolution (think technological advances through the decades) or as a sudden swing in our lifestyle, as we're seeing now with the new and necessary practice of "social distancing."

Now more than ever before, our homes are about achieving a heightened level of efficiency, comfort, security and hopefully, some pleasure too.

As a design firm, we firmly believe in adaptable design. This approach to interiors isn't about achieving any particular aesthetic. Rather, it focuses on longevity offered by a home's layout and finishes; it's about simplicity, with the ability to layer in elements as needs and wants change over time.

Here are some things to consider when it comes to your own home's adaptability.



Remember, when the place has your needs in mind, it will always feel like "home." Think about how you sleep and wake, how you live, work and play.

WHAT DO YOU REALLY NEED?

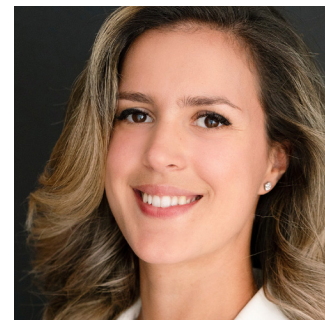
Like a custom-tailored suit, a well-fitting interior should be made just for you. Remember, when the place has your needs in mind, it will always feel like "home." Think about how you sleep and wake, how you

live, work and play.

Now, what will make those tasks more enjoyable? As a designer, I encourage my clients to live in their home for a while, before deciding on any renovation plans. This allows them to establish a realistic routine,



Eugenia Triandos



Korina Kharmis

and evaluate their list of needs and wants against some real-time experiences.

THE OPEN LAYOUT

There's a reason open-concept interiors are the layout of choice in modern homes of all sizes. They offer versatility to accommodate a variety



Adaptable design leans toward neutral colours and finishes that have greater staying power.

of functions and furnishings.

This is ideal for the homeowner who may be facing different needs in the future, thanks to a growing family, a new career or a newly empty nest.

There are ways to delineate different living areas within an open interior, such as shelves used as room dividers, through distinct sitting areas, and through the use of strategic focal points.

STAYING POWER

On the topic of versatility, adaptable design leans toward neutral colours and finishes that have greater staying power. There are obvious selections that will still appeal to you in 20 years.

Rather than looking at what's "trending," explore those classic choices. Spend a little more on a high-quality product that will withstand the test of time - and trends!

This is a good rule-of-thumb for larger-scale (and higher priced) items like flooring and cabinets. Consider colour chameleons like cream, grey and white, which are all very easy-going and can change moods on a dime.

Tip: Your castle, your call. If you really love a feature or finish (or hate it!) speak up. A good designer will walk you through your options, incorporating your wish list while steering toward your greater design objectives.

Adaptable design is about rolling with whatever life has in store for us. Some home design decisions can be made in advance, while others need to happen on the fly. There are many benefits to being adaptable.

The goal is comfort — both in the home and throughout the design process. Aim for a home that can bend to meet your needs — whatever the future holds — and you'll always find yourself in your comfort zone.

Designers Eugenia Triandos and Korina Kharmis are co-founders of Hibou Design & Co. based in Montreal and are well-known for creating stylish interiors. Visit hiboudesignco.com