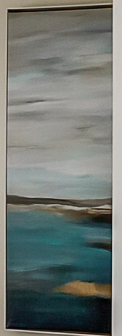




From the Cover





A Note from the Designer

This kitchen is truly the heart of the home in more ways than one. It's the first room you see as you walk in, and it's open to both the living room and dining room. It's the central hub for all family meals, entertaining, weekend hangouts, and so much more. You can be sitting at the island catching up on some work, lounging in the living room watching the game, or doing some homework on the dining room table all while maintaining a conversation with the cook. The double island means one can be used as a prep surface while the other remains clear, which is useful for entertaining but also for when your family just wants to spend time with you while doing their own thing. Open concepts like this one are great for families with small toddlers who are too young to be alone. The laundry room is also on the same floor, which means Mom and Dad will never have to leave their babies out of sight while getting some work done around the house.

The main wall of cabinetry where the stove is includes a hidden, paneled fridge and a mirrored pantry, creating symmetry on both ends. With few or no upper cabinets in this kitchen, the natural light coming in from both ends of the house shines right through, and even on gloomy days fills the home with light. The double island not only is the perfect solution to a tricky layout but also gives our clients the best of both worlds: one island where the sink can face out toward the window so they can watch their son play in the backyard and another where they can host guests and face the stools.

Having two islands plus a built-in dining room create plenty of space for added storage. The dining room bar is used as both a home for the family's wine collection and a coffee bar. The storage found in the island facing the window is perfect for board games and toddler toys. Outside of the main workspace is the kitchen, which is close enough to be accessible when seated at the dining table or island. It's great for sippy cups and all of the plasticware, which can remain accessible to the little ones.

- *Eugenia Triandaf and Korina Kharis,
Hibou Design & Co*